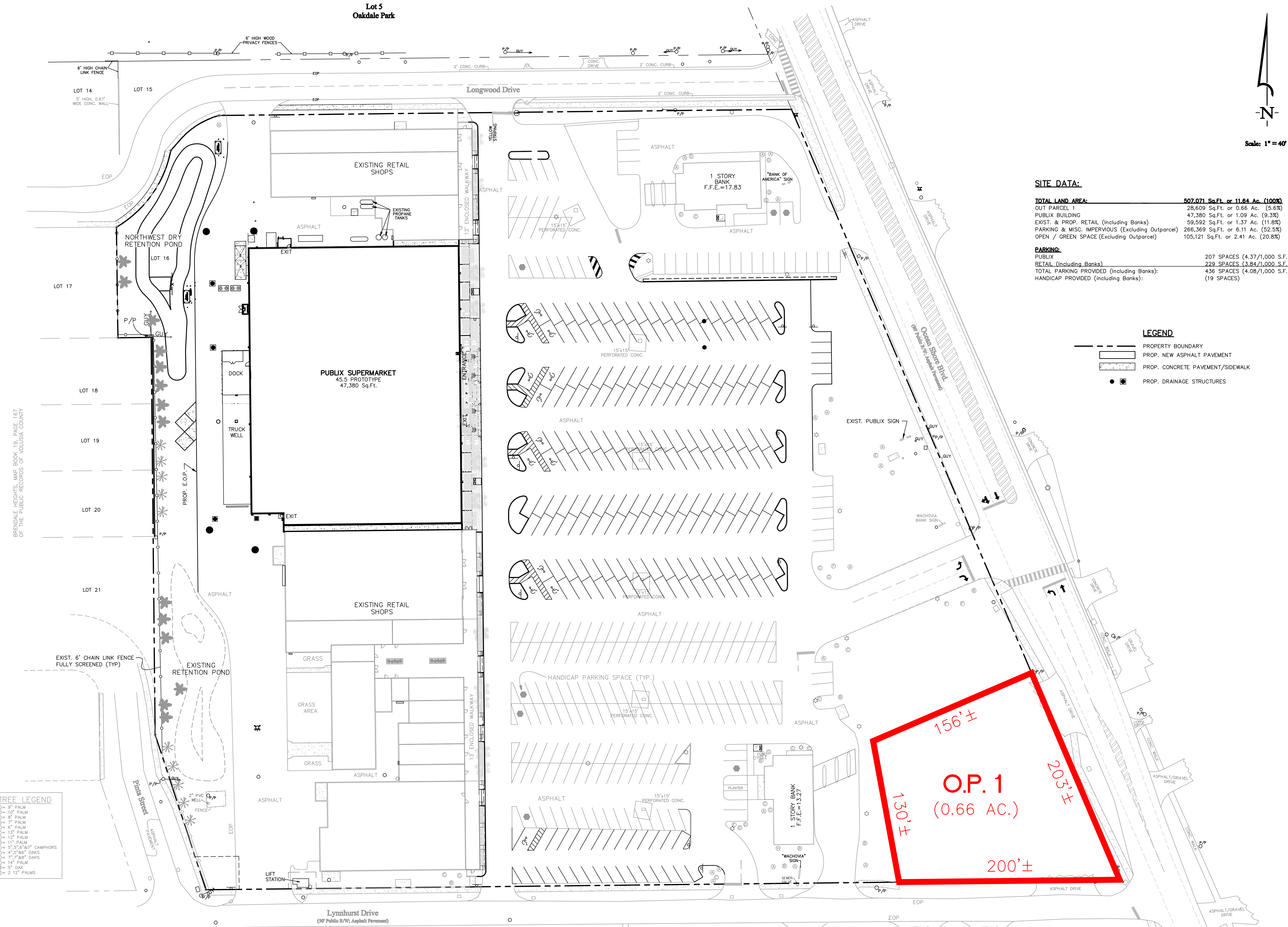


Lot 5
Oakdale Park



SITE DATA:

TOTAL LAND AREA:	507,071 Sq.Ft. or 11.64 Ac. (100%)
OUT PARCEL 1	28,609 Sq.Ft. or 0.66 Ac. (5.6%)
PUBLIX BUILDING	47,380 Sq.Ft. or 1.09 Ac. (9.3%)
EXIST. & PROP. RETAIL (Including Banks)	59,592 Sq.Ft. or 1.37 Ac. (11.8%)
PARKING & MISC. IMPERVIOUS (Excluding Outparcel)	266,369 Sq.Ft. or 6.11 Ac. (52.5%)
OPEN / GREEN SPACE (Excluding Outparcel)	105,121 Sq.Ft. or 2.41 Ac. (20.8%)
PARKING:	
PUBLIX	207 SPACES (4.37/1,000 S.F.)
RETAIL (Including Banks)	229 SPACES (3.84/1,000 S.F.)
TOTAL PARKING PROVIDED (Including Banks):	436 SPACES (4.08/1,000 S.F.)
HANDICAP PROVIDED (Including Banks):	(19 SPACES)

LEGEND

- PROPERTY BOUNDARY
- PROP. NEW ASPHALT PAVEMENT
- PROP. CONCRETE PAVEMENT/SIDEWALK
- PROP. DRAINAGE STRUCTURES

TREE LEGEND

	5" PALM
	10" PALM
	8" PALM
	7" PALM
	6" PALM
	5" PALM
	4" PALM
	3" PALM
	2" PALM
	1" PALM
	1/2" PALM
	1/4" PALM
	1/8" PALM
	1/4" CAMPHORS
	2"-3" OAKS
	3"-4" OAKS
	5" OAK
	6" OAK
	8" OAK
	10" OAK
	12" OAK
	14" OAK
	16" OAK
	18" OAK
	20" OAK
	22" OAK
	24" OAK
	26" OAK
	28" OAK
	30" OAK
	32" OAK
	34" OAK
	36" OAK
	38" OAK
	40" OAK
	42" OAK
	44" OAK
	46" OAK
	48" OAK
	50" OAK
	52" OAK
	54" OAK
	56" OAK
	58" OAK
	60" OAK
	62" OAK
	64" OAK
	66" OAK
	68" OAK
	70" OAK
	72" OAK
	74" OAK
	76" OAK
	78" OAK
	80" OAK
	82" OAK
	84" OAK
	86" OAK
	88" OAK
	90" OAK
	92" OAK
	94" OAK
	96" OAK
	98" OAK
	100" OAK

BREDALE HEIGHTS, MAP BOOK 19, PAGE 167 OF THE PUBLIC RECORDS OF VOLUSIA COUNTY



500 S. Florida Avenue
Suite 240
Lakeland, FL 33801
Telephone: 863-647-1581
Facsimile: 863-647-9992
Email: jhunter@centurycompanies.net

Prepared For
ODYSSEY (IX) DP II, LLC

500 S. Florida Ave., Suite 700
Lakeland, FL 33801
Telephone: 863-647-1581
Facsimile: 863-647-9992

Construction Plans
For
Ormond Beach Publix Renovation
Section 34, Township 13 S., Range 32 E.
Volusia County, Florida